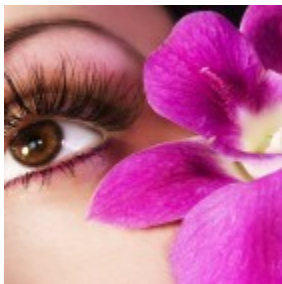


What are Eyelash Extensions?



A H Francis Lashes are made from a naturally curved synthetic material.

They look identical to human lashes & are applied individually to the natural lashes with a professional adhesive to create a strong bond. Lash Extensions are virtually weightless & come in a wide range of thicknesses, curls, shapes & colours.

FREQUENTLY ASKED QUESTIONS

How long should a treatment take?

The procedure takes approximately 45-60 mins and top ups/in fills are recommended every 2-3 weeks.

What is the difference between lash extensions and traditional false lashes?

Designed to thicken and lengthen your natural eyelashes, Lash Extensions are nothing like “traditional false lashes” which are produced in clumps of about 5 or 6 and are stuck to your eyelashes with self-adhesive and last a couple of days.

Lash Extensions are individual lashes and last for weeks. Made to be identical to natural lashes the lash base is flat and the lash tip is fine and polished, just like real lashes.



With our technique Lash Extensions are applied directly to your own lashes, one extension to one natural lash. This is repeated until you have a full set of Lash Extensions creating the illusion of fuller, thicker more defined lashes.

Is there a maintenance requirement?

Like your nails and the hair on your head, your individual eyelashes grow out on a continuous cycle of replenishment. The average cycle is about 90 days. While some individual eyelash extensions may last for weeks, to ideally maintain the thickness, fullness and for best results, we recommend you to top up about every 2-3 weeks.

Even if I don't have many lashes myself, can a full look be achieved?

We have a number of different lash application techniques that can give even sparse lashes a full look. Unfortunately lash extensions cannot be applied to alopecia sufferers as there has to be some lashes to attach the extensions to.